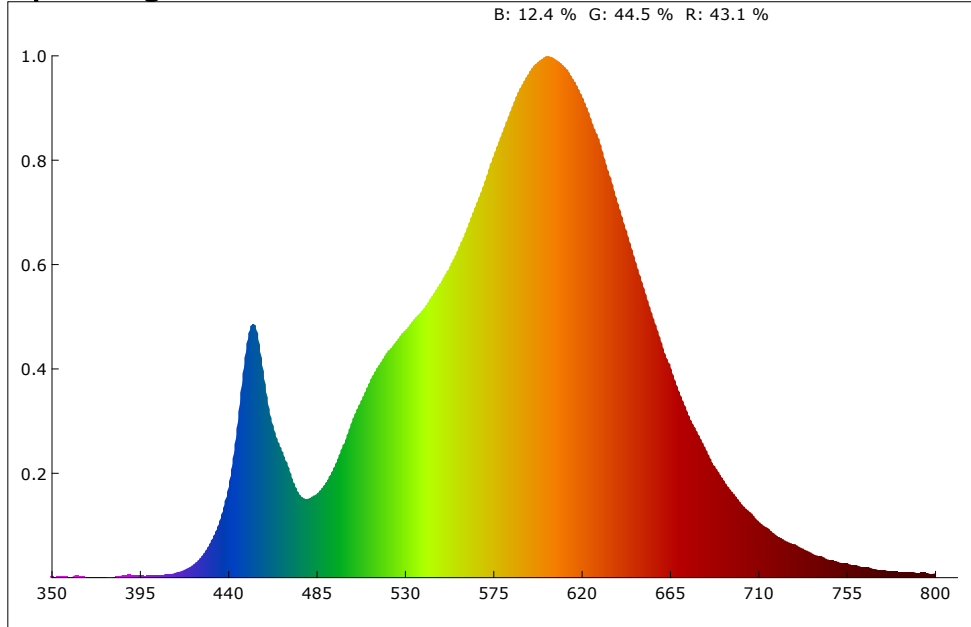
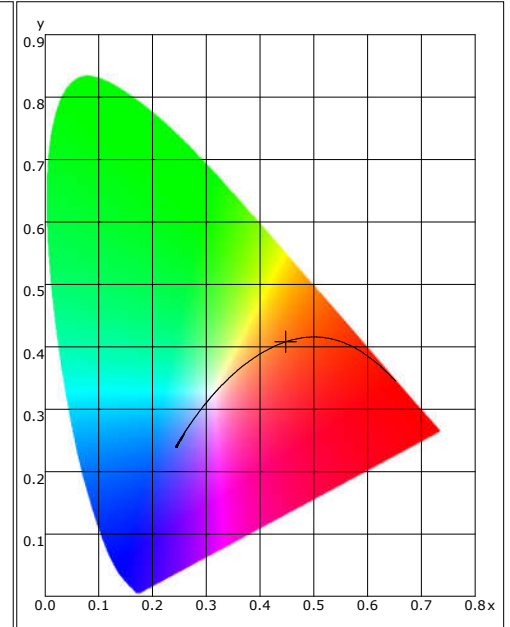


Spectrogram



CIE1931



Color Parameter:

x: 0.4477 y: 0.4076 u: 0.2560 v: 0.3496 u': 0.2560 v': 0.5244
 R_ratio: 43.1 % G_ratio: 44.5 % B_ratio: 12.4 % RedRatio: 22.8 % GreenRatio: 75.8 % BlueRatio: 1.5 %

Ra: 80.9 AvgR: 74.8
 R1: 78.8 R2: 89.7 R3: 96.4 R4: 78.7 R5: 79.4 R6: 88.2 R7: 81.0 R8: 55.3
 R9: 0.9 R10: 76.8 R11: 77.4 R12: 68.4 R13: 81.2 R14: 98.7 R15: 71.0

CCT: 2854 K Flux: 1036.696 lm PeakWave: 603.6 nm SDCM: 3.9
 S/P: 1.2 CentralWave: 596.2 nm DominantWave: 583.4 nm CentroidWave: 584.7 nm
 HalfWidth: 119.4 nm duv: 0.00005 purity: 56.7 % CQS: 79.6
 LER(TM-30): 330.4 Ep: 3137.7 mw Rg: 95.3 Rf: 81.5
 Red Ep: 1306.9 mw Near red Ep: 95.9 mw Near infrared Ep: 4.6 mw

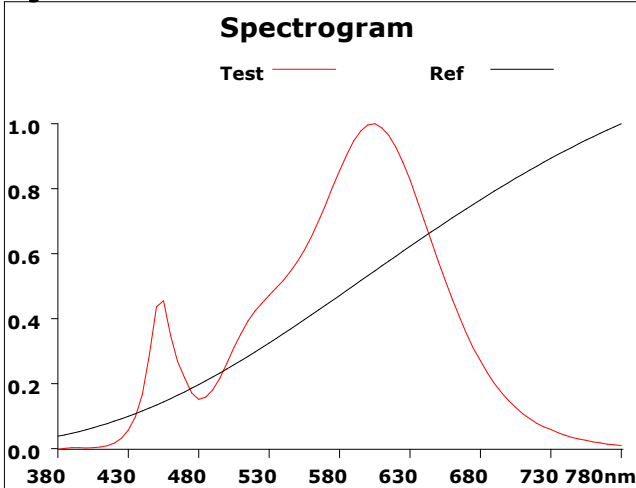
Electrical parameters:

Effic: 95.1 Lm/W Energy: 111.8 Effi: E
 U: 229.5 V I: 0.092 A P: 10.900 W Pf: 0.513

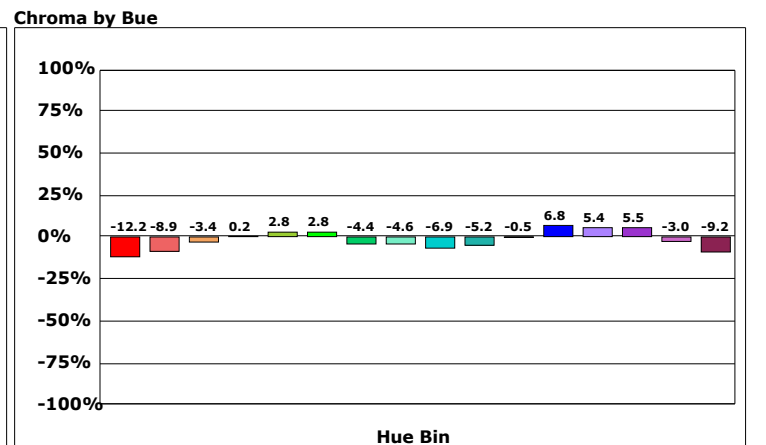
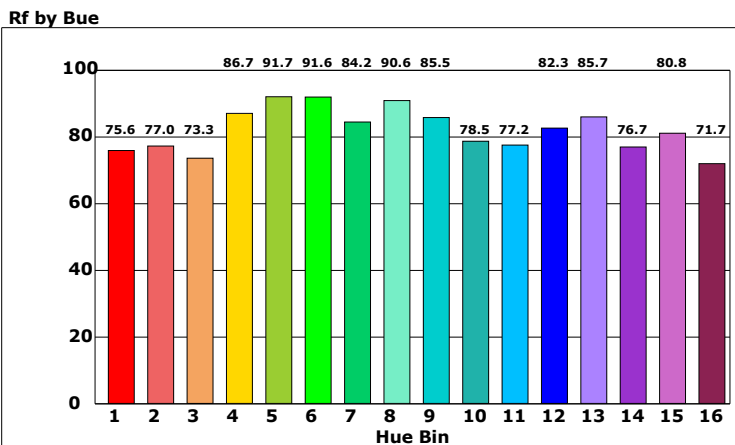
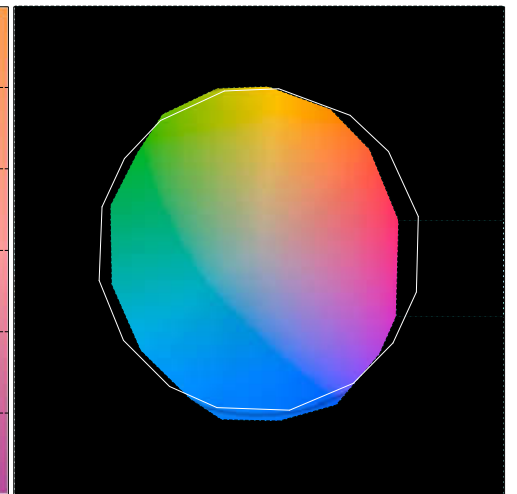
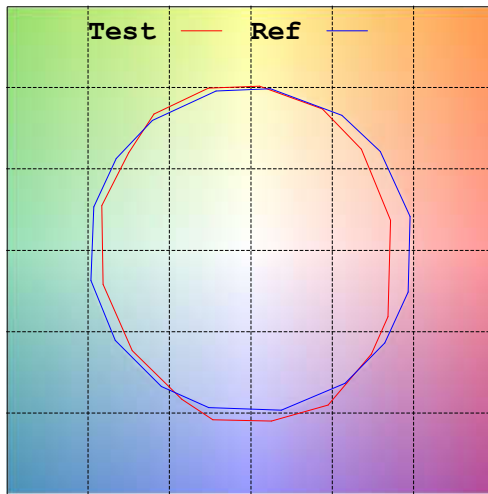
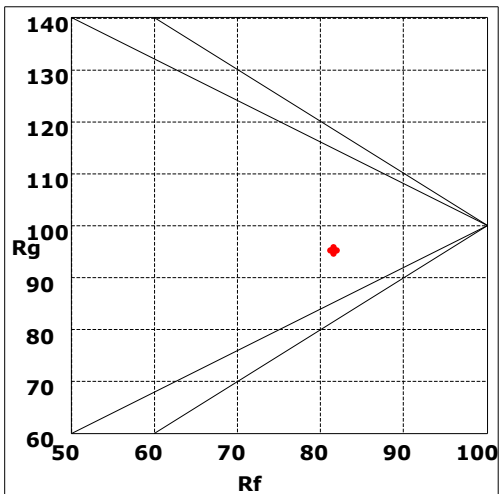
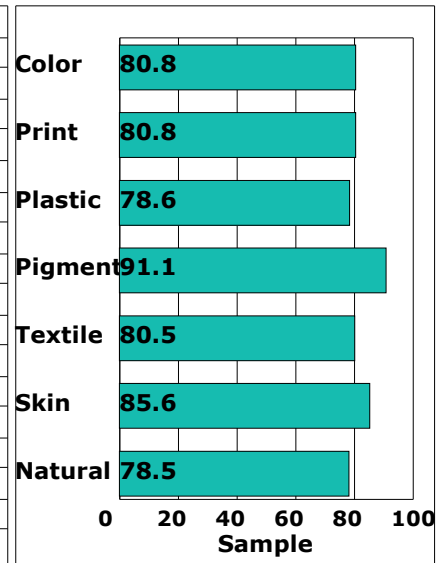
Product model: 筒灯
 Product number: 12W 230V 3000K RA80 DIM
 Tester: WZM
 Remarks:

Manufacturer: TECO
 Test unit: TECO
 Date of observation: 08/22/23

Rf: 81.5 CCT: 2854K u': 0.2560
 Rg: 95.3 LER: 330.4 Duv: 0.00005 v': 0.5244

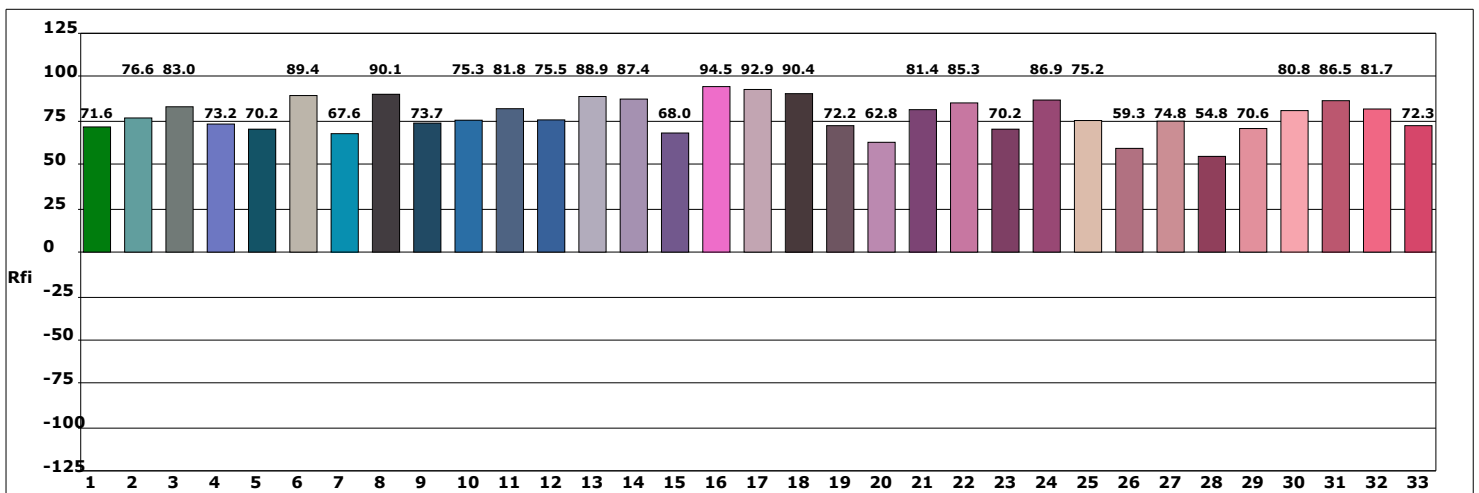
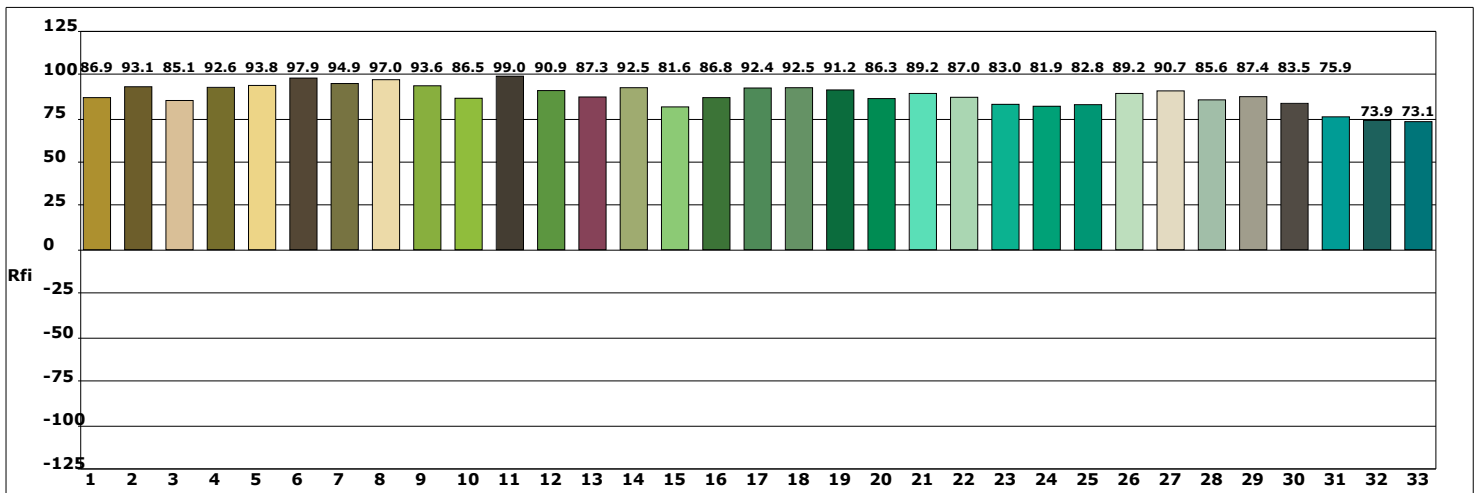
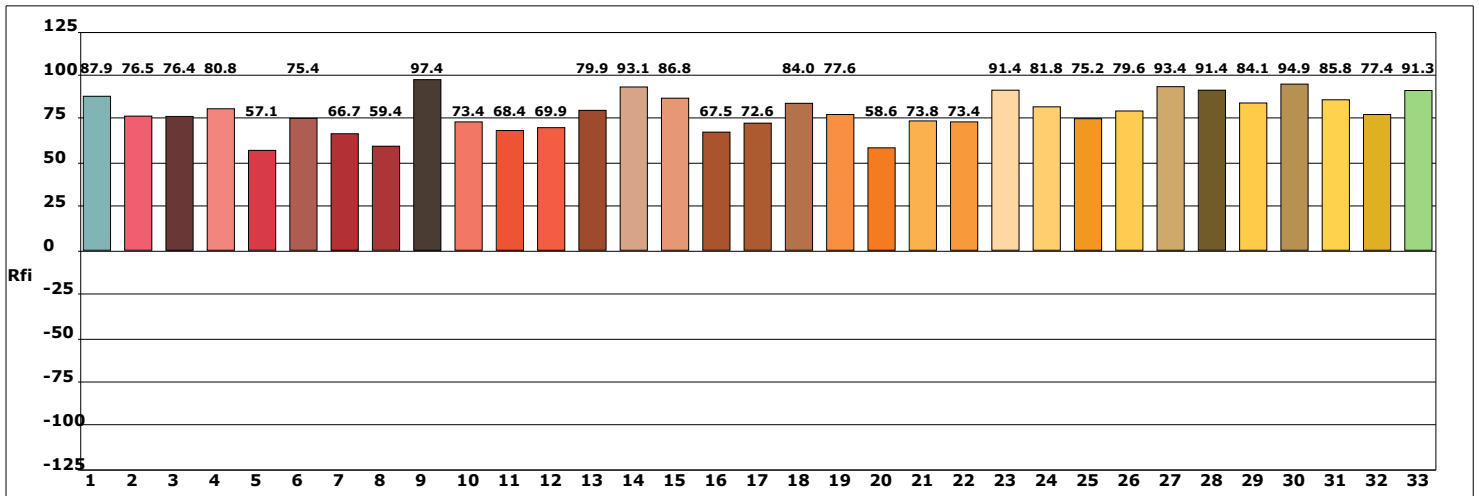


Hue Bin	Rf	Chroma	Hue
1	75.6	-12.2%	-0.0%
2	77.0	-8.9%	7.6%
3	73.3	-3.4%	12.2%
4	86.7	0.2%	6.9%
5	91.7	2.8%	4.4%
6	91.6	2.8%	-3.0%
7	84.2	-4.4%	-7.3%
8	90.6	-4.6%	-1.7%
9	85.5	-6.9%	3.8%
10	78.5	-5.2%	11.1%
11	77.2	-0.5%	14.8%
12	82.3	6.8%	3.9%
13	85.7	5.4%	-7.2%
14	76.7	5.5%	-16.0%
15	80.8	-3.0%	-10.2%
16	71.7	-9.2%	-17.4%



Product model: 筒灯
 Product number: 12W 230V 3000K RA80 DIM
 Tester: WZM
 Remarks:

Manufacturer: TECO
 Test unit: TECO
 Date of observation: 08/22/23



Product model: 筒灯
 Product number: 12W 230V 3000K RA80 DIM
 Tester: WZM
 Remarks:

Manufacturer: TECO
 Test unit: TECO
 Date of observation: 08/22/23