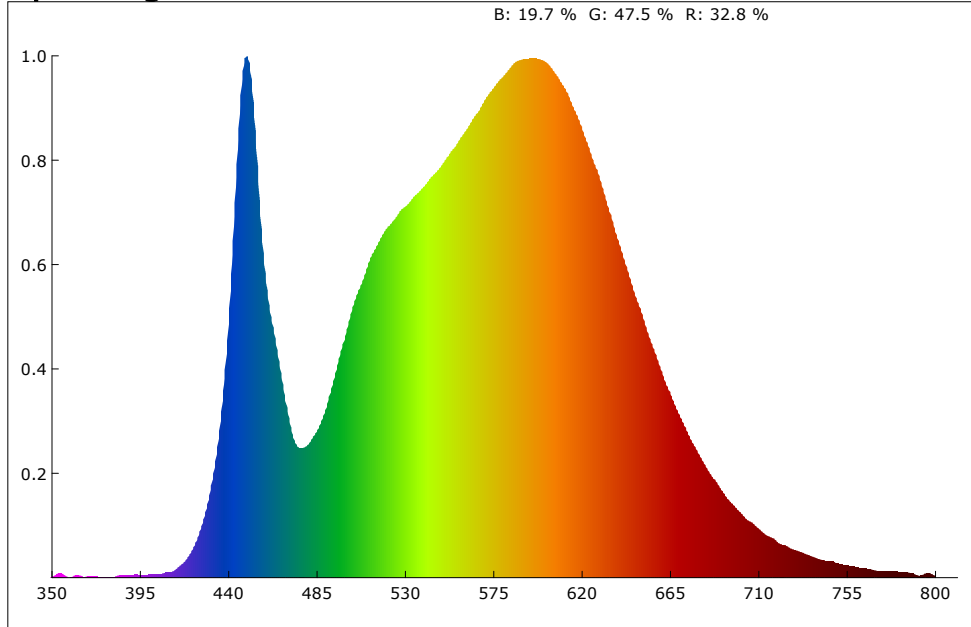
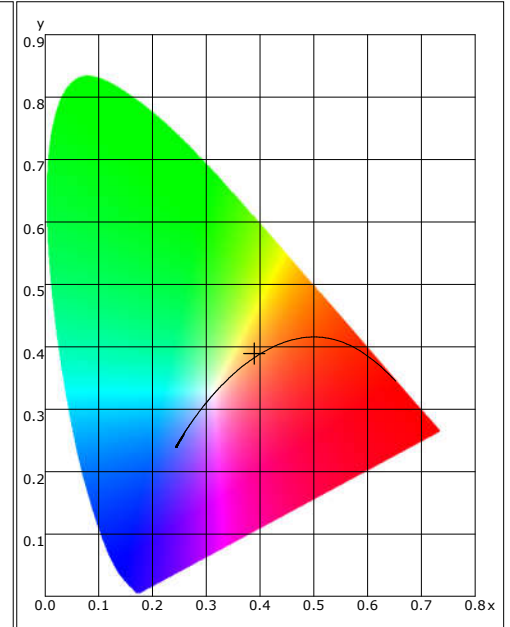


Spectrogram



CIE1931



Color Parameter:

x: 0.3891 y: 0.3886 u: 0.2261 v: 0.3386 u': 0.2261 v': 0.5079
 R_ratio: 32.8 % G_ratio: 47.5 % B_ratio: 19.7 % RedRatio: 17.7 % GreenRatio: 80.2 % BlueRatio: 2.1 %

Ra: 81.8 AvgR: 74.7
 R1: 79.2 R2: 87.1 R3: 94.2 R4: 81.7 R5: 80.2 R6: 84.0 R7: 86.0 R8: 62.5
 R9: 3.3 R10: 70.6 R11: 80.6 R12: 60.7 R13: 80.9 R14: 96.7 R15: 72.5

CCT: 3861 K Flux: 1056.261 lm PeakWave: 449.4 nm SDCM: 3.7
 S/P: 1.6 CentralWave: 451.2 nm DominantWave: 578.2 nm CentroidWave: 565.9 nm
 HalfWidth: 20.9 nm duv: 0.00294 purity: 33.4 % CQS: 82.3
 LER(TM-30): 335.4 Ep: 3149.3 mw Rg: 95.4 Rf: 82.2
 Red Ep: 1006.7 mw Near red Ep: 69.5 mw Near infrared Ep: 3.2 mw

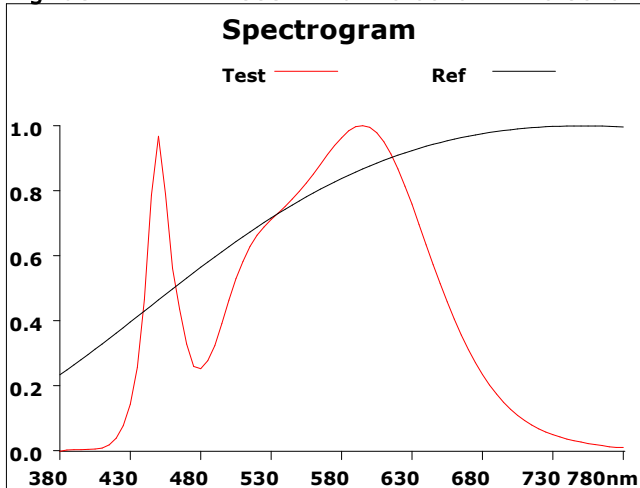
Electrical parameters:

Effic: 94.3 Lm/W Energy: 110.9 Effi: E
 U: 230.0 V I: 0.094 A P: 11.200 W Pf: 0.521

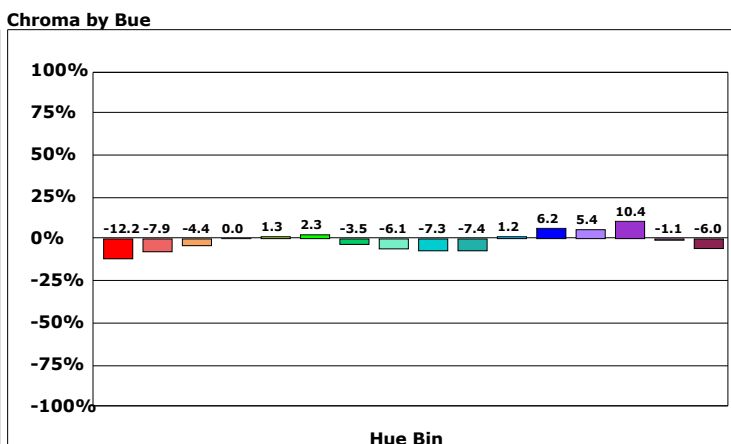
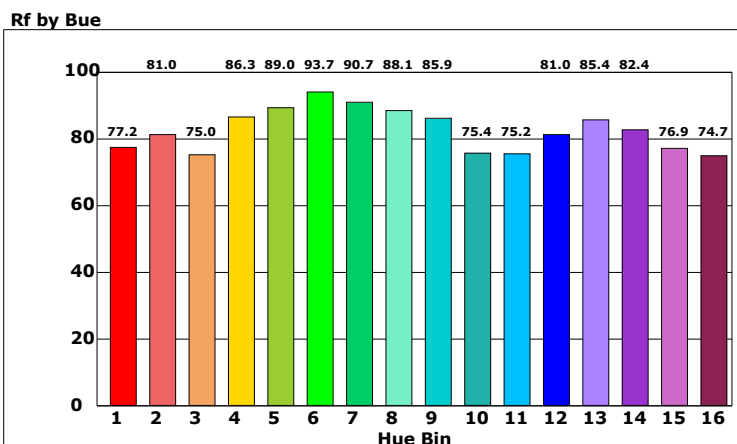
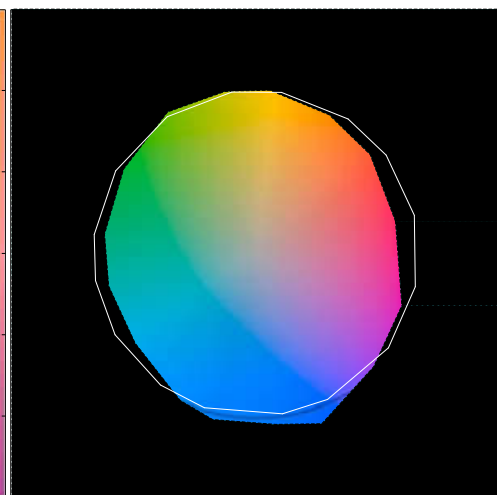
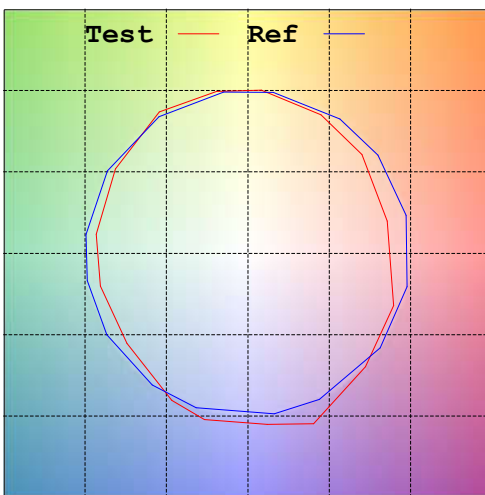
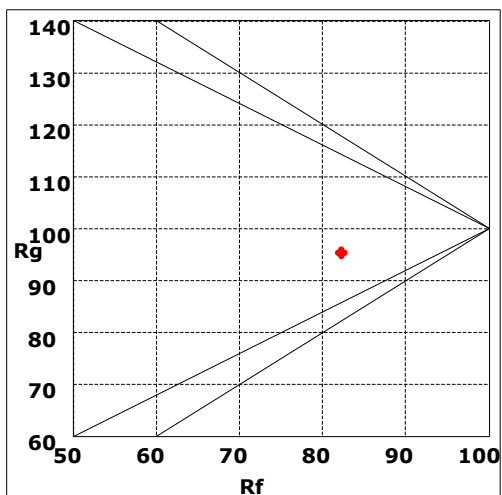
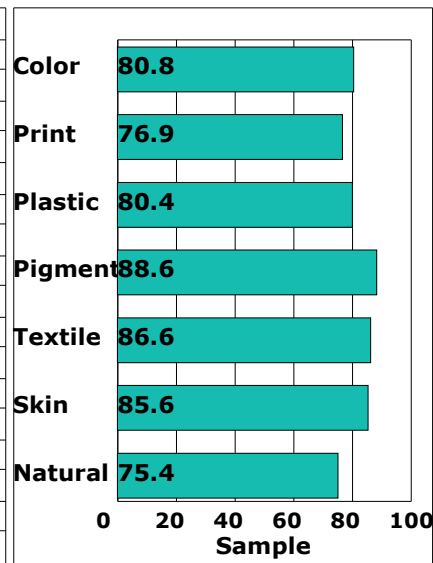
Product model: 筒灯
 Product number: 12W 230V 4000K RA80 DIM
 Tester:
 Remarks:

Manufacturer: TECO
 Test unit: TECO
 Date of observation: 2023/8/22

Rf: 82.2 CCT: 3861K u': 0.2261
 Rg: 95.4 LER: 335.4 Duv: 0.00294 v': 0.5079

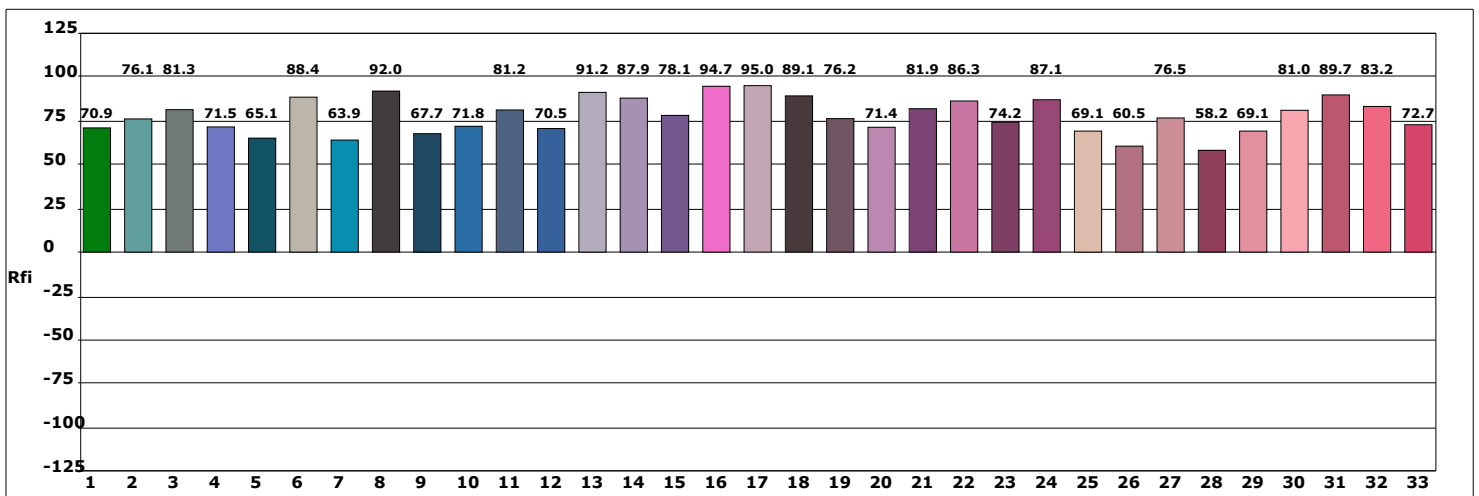
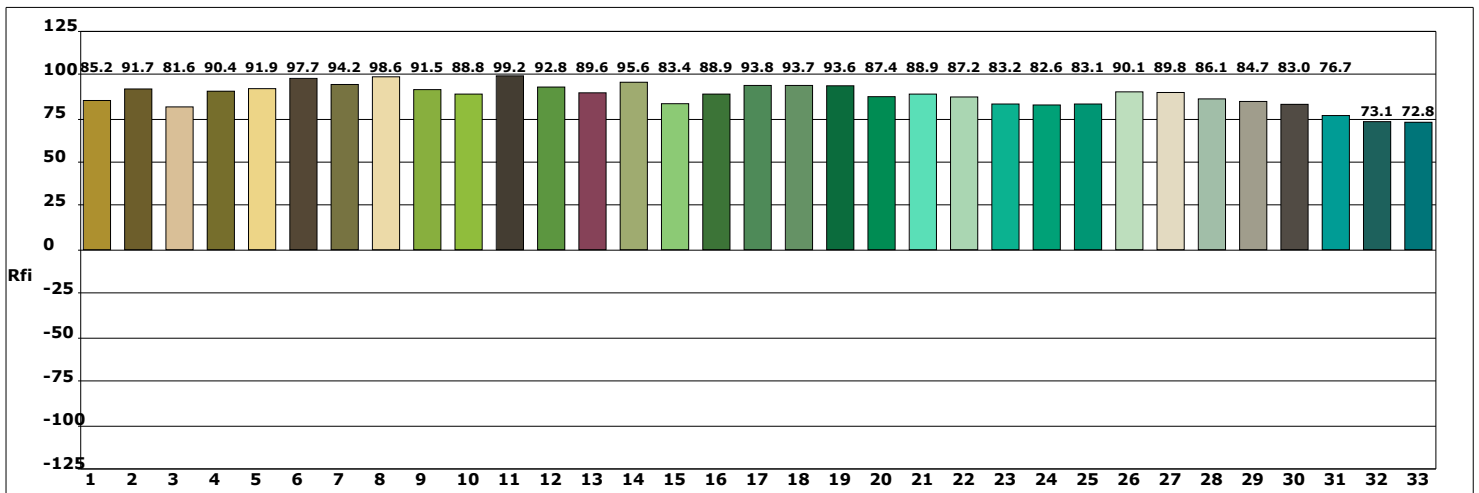
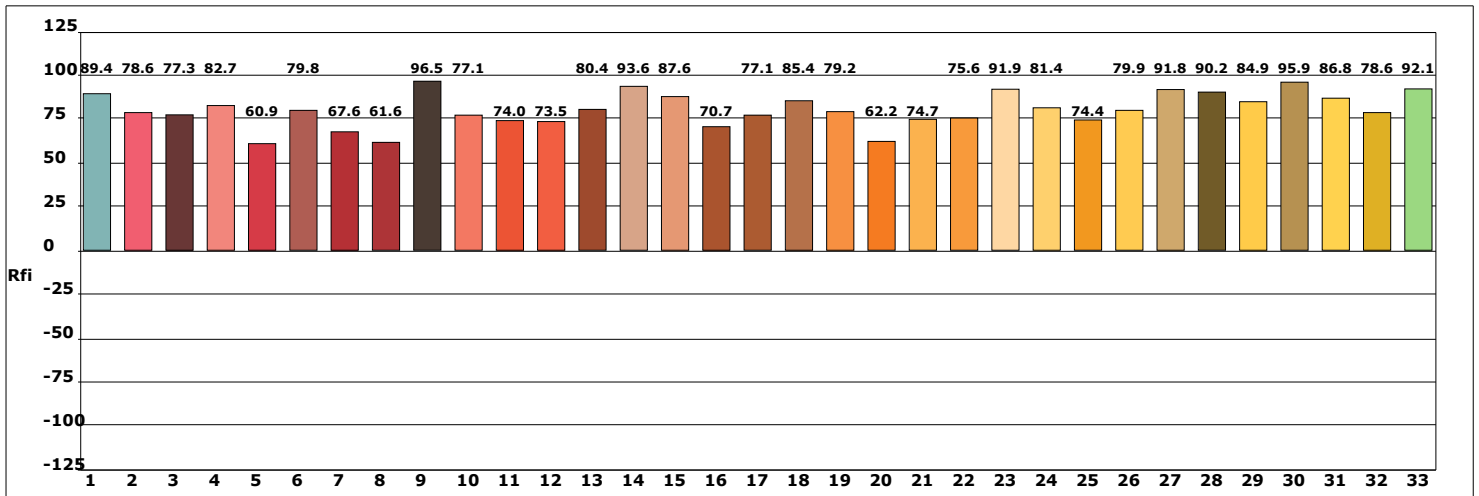


Hue Bin	Rf	Chroma	Hue
1	77.2	-12.2%	-1.1%
2	81.0	-7.9%	5.7%
3	75.0	-4.4%	11.2%
4	86.3	0.0%	7.4%
5	89.0	1.3%	4.3%
6	93.7	2.3%	-1.7%
7	90.7	-3.5%	-3.8%
8	88.1	-6.1%	-1.5%
9	85.9	-7.3%	4.8%
10	75.4	-7.4%	11.2%
11	75.2	1.2%	15.2%
12	81.0	6.2%	6.4%
13	85.4	5.4%	-5.6%
14	82.4	10.4%	-11.2%
15	76.9	-1.1%	-14.6%
16	74.7	-6.0%	-13.0%



Product model: 筒灯
 Product number: 12W 230V 4000K RA80 DIM
 Tester:
 Remarks:

Manufacturer: TECO
 Test unit: TECO
 Date of observation: 2023/8/22



Product model: 筒灯
 Product number: 12W 230V 4000K RA80 DIM
 Tester:
 Remarks:

Manufacturer: TECO
 Test unit: TECO
 Date of observation: 2023/8/22