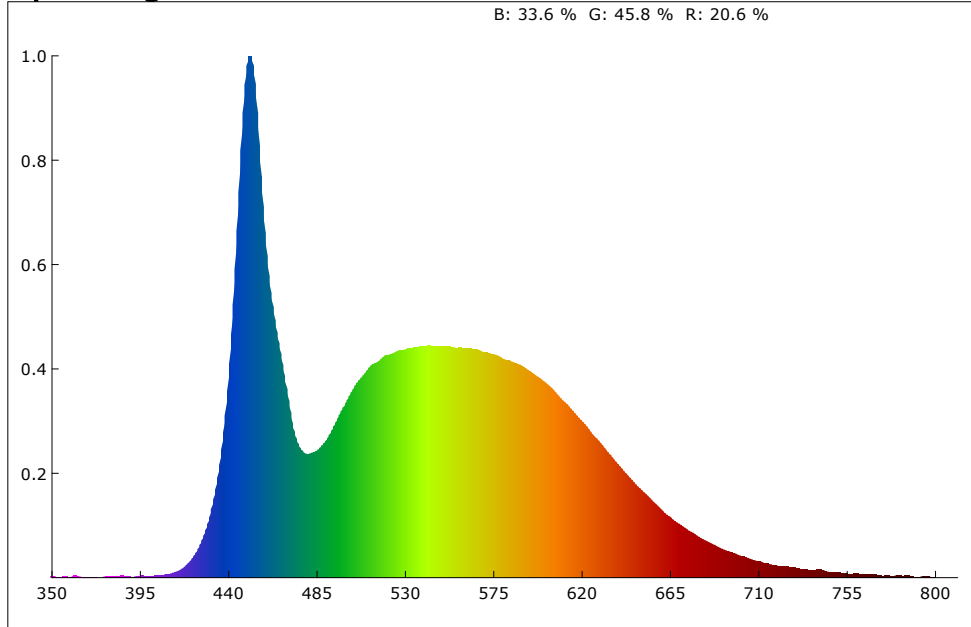
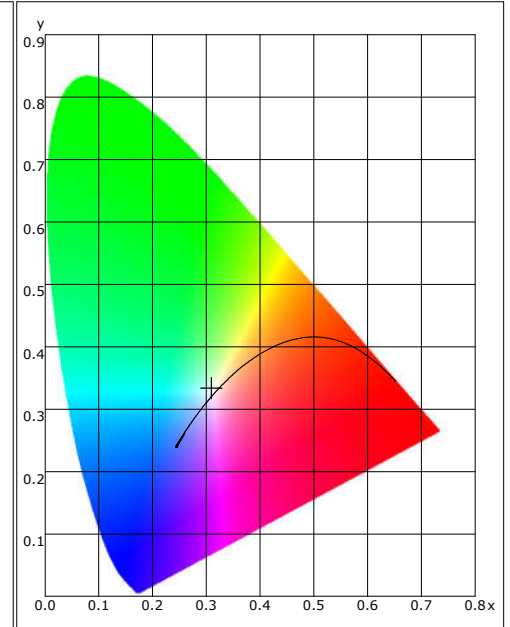


Spectrogram



CIE1931



Color Parameter:

x: 0.3095      y: 0.3333      u: 0.1940      v: 0.3134      u': 0.1940      v': 0.4701  
 R\_ratio: 20.6 %      G\_ratio: 45.8 %      B\_ratio: 33.6 %      RedRatio: 12.4 %      GreenRatio: 83.4 %      BlueRatio: 4.2 %

Ra: 83.1      AvgR: 75.5  
 R1: 80.3      R2: 87.7      R3: 92.0      R4: 81.8      R5: 81.4      R6: 83.4      R7: 89.1      R8: 69.6  
 R9: 5.4      R10: 70.8      R11: 80.9      R12: 56.6      R13: 82.6      R14: 95.9      R15: 75.4

CCT: 6649 K      Flux: 1039.355 lm      PeakWave: 451.4 nm      SDCM: 2.5  
 S/P: 2.3      CentralWave: 453.0 nm      DominantWave: 491.7 nm      CentroidWave: 539.6 nm  
 HalfWidth: 20.7 nm      duv: 0.00699      purity: 8.0 %      CQS: 85.0  
 LER(TM-30): 310.1      Ep: 3352.0 mw      Rg: 93.9      Rf: 81.5  
 Red Ep: 679.0 mw      Near red Ep: 48.2 mw      Near infrared Ep: 2.5 mw

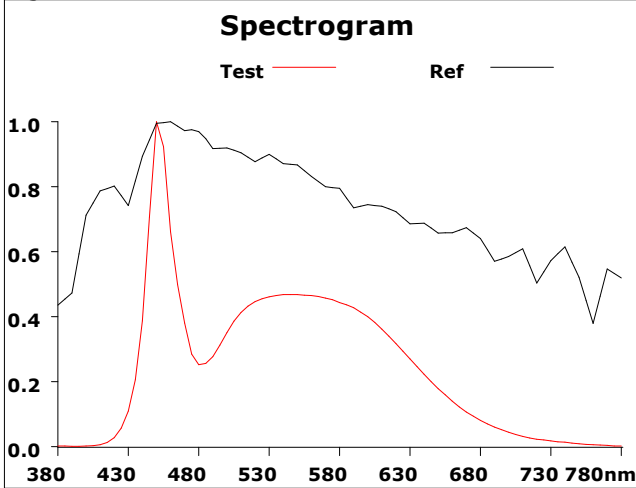
Electrical parameters:

Effic: 97.1 Lm/W      Energy: 114.2      Effi: E  
 U: 229.5 V      I: 0.093 A      P: 10.700 W      Pf: 0.503

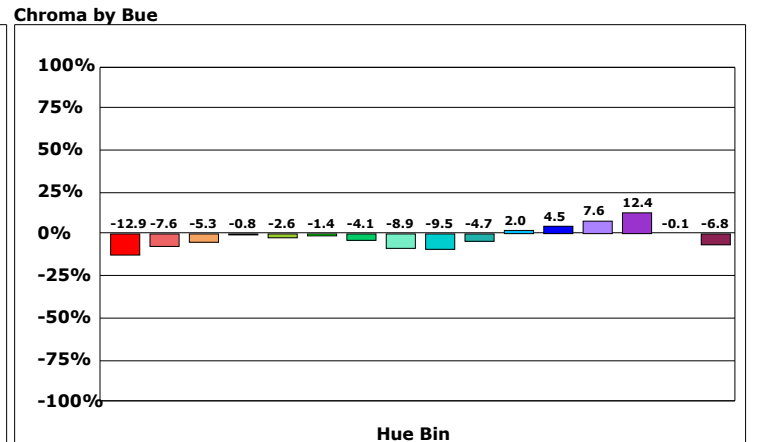
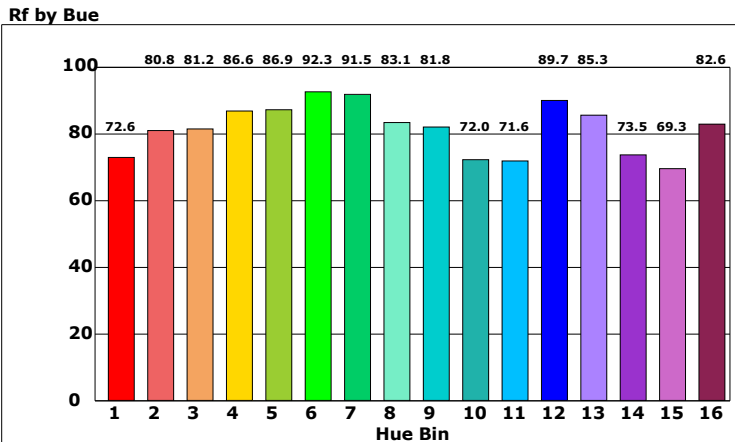
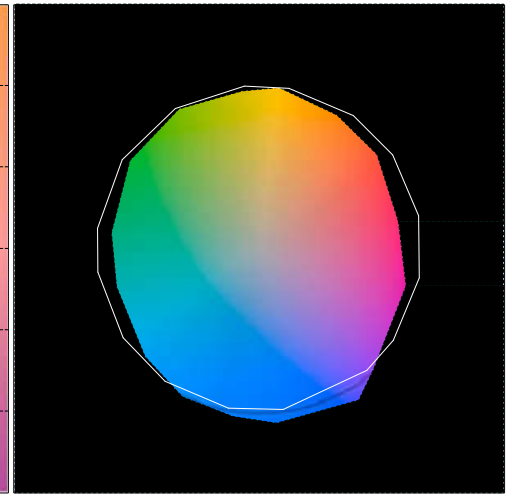
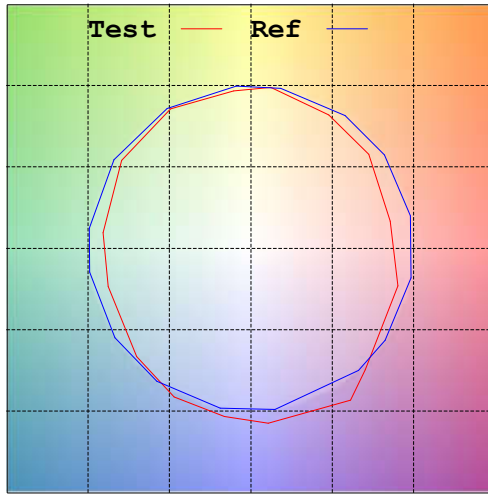
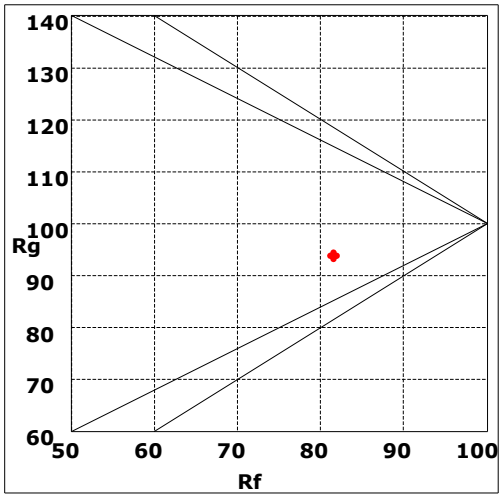
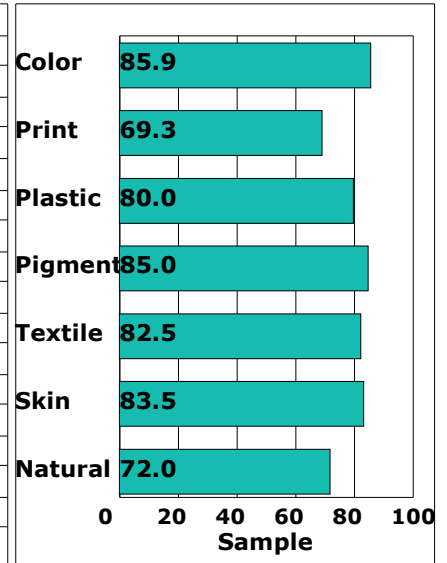
Product model: 筒灯  
 Product number: 12W 230V 6500K RA80 DIM  
 Tester: WZM  
 Remarks:

Manufacturer: TECO  
 Test unit: TECO  
 Date of observation: 2023/8/22

Rf: 81.5 CCT: 6649K u': 0.1940  
 Rg: 93.9 LER: 310.1 Duv: 0.00699 v': 0.4701

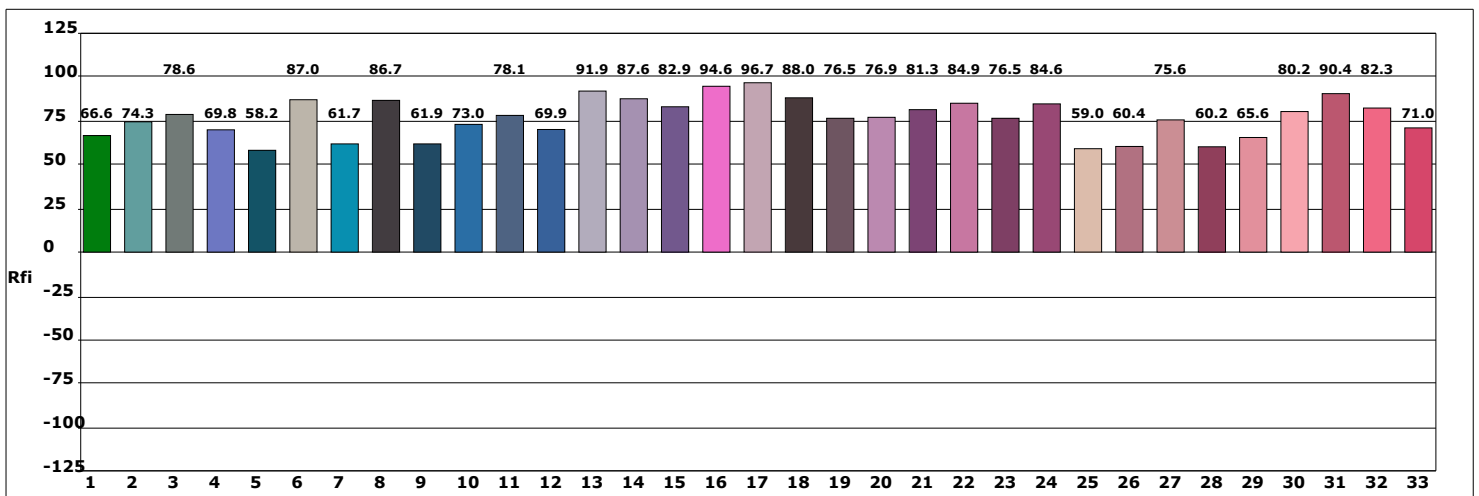
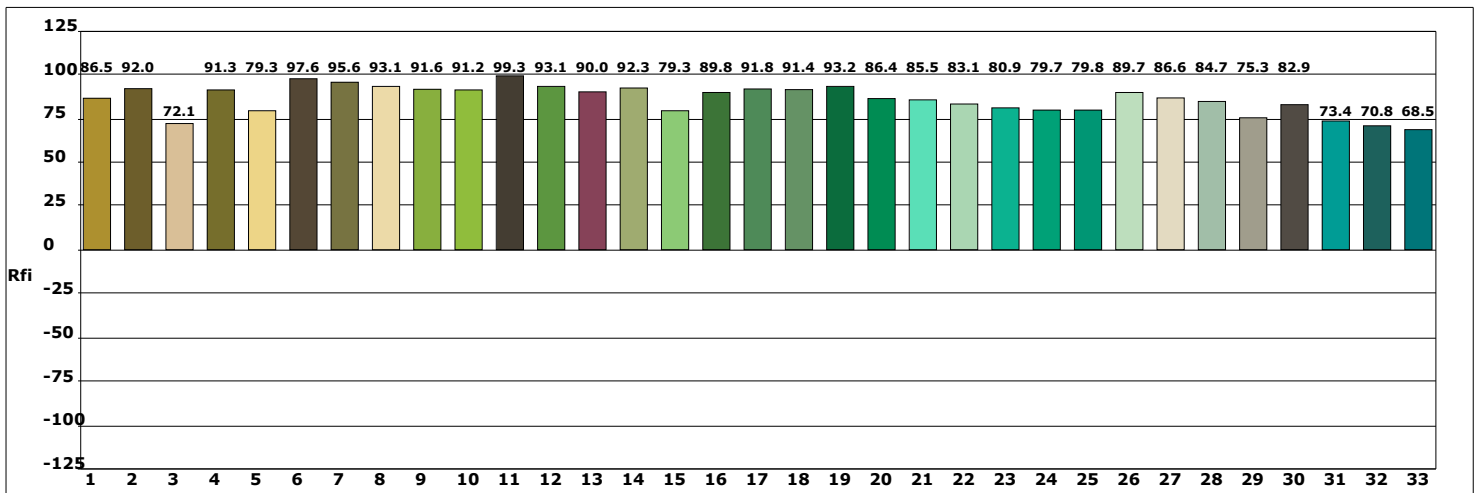
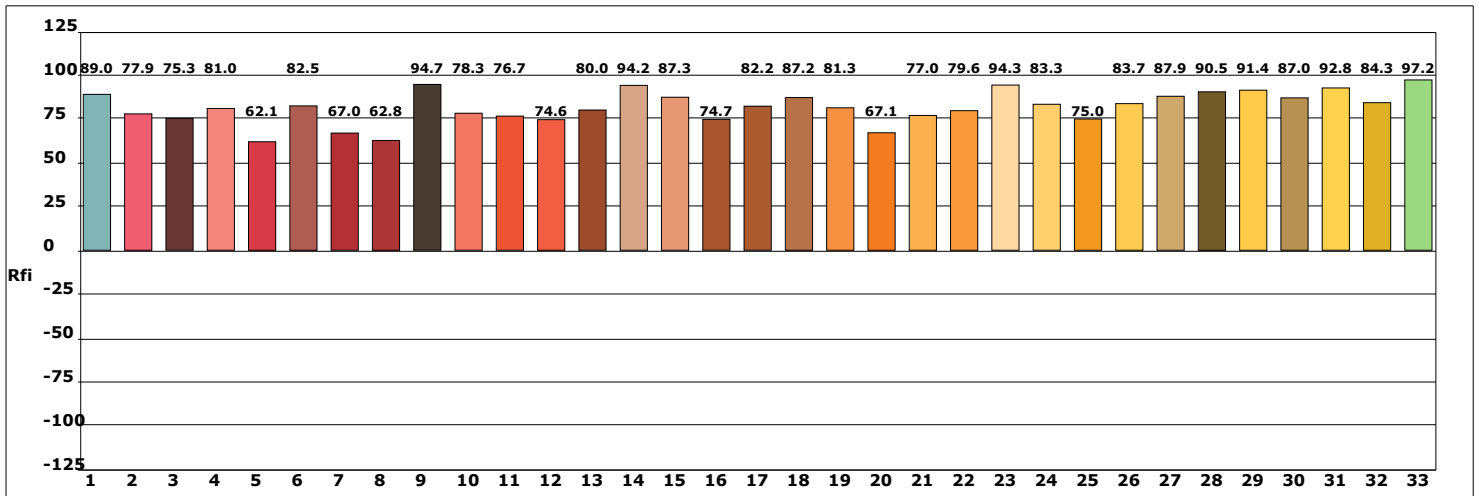


Hue Bin	Rf	Chroma	Hue
1	72.6	-12.9%	-1.0%
2	80.8	-7.6%	5.7%
3	81.2	-5.3%	8.4%
4	86.6	-0.8%	6.2%
5	86.9	-2.6%	2.1%
6	92.3	-1.4%	-1.8%
7	91.5	-4.1%	-2.3%
8	83.1	-8.9%	1.0%
9	81.8	-9.5%	10.9%
10	72.0	-4.7%	17.0%
11	71.6	2.0%	14.2%
12	89.7	4.5%	3.5%
13	85.3	7.6%	-5.6%
14	73.5	12.4%	-14.1%
15	69.3	-0.1%	-21.9%
16	82.6	-6.8%	-6.3%



Product model: 筒灯  
 Product number: 12W 230V 6500K RA80 DIM  
 Tester: WZM  
 Remarks:

Manufacturer: TECO  
 Test unit: TECO  
 Date of observation: 2023/8/22



Product model: 筒灯  
 Product number: 12W 230V 6500K RA80 DIM  
 Tester: WZM  
 Remarks:

Manufacturer: TECO  
 Test unit: TECO  
 Date of observation: 2023/8/22