

GU10 FIN Zoomable LED

Enjoy customizable lighting with Teco's GU10 FIN Zoomable, featuring adjustable beam angles of 24°, 36°, and 55°.

Perfect for any setting needing adaptable illumination, such as retail spaces and dining areas.

Easy installation means hassle-free setup for both professionals and end-users.

Experience the ideal lighting atmosphere, tailored to your space's specific requirements.



TECO

inspired by technology

GU10 FIN Zoomable LED Bulb

Dimmable

- Leading edge dimmer ✓
- Trailing edge dimmer ✓



GU10 7.5W-50W Zoomable LED spot light

- ✓ Standard size lamps
- ✓ Built-in high compatibility dimmable driver
- ✓ For commercial application, 24 hours working
- ✓ COB inside, high efficiency, high CRI
- ✓ Fixed height does not affect assembly
- ✓ Compliant with EMC / LVD / RoHS



RA 98 LM80



Article Code TGU10FIN-7.5W-XDZOM

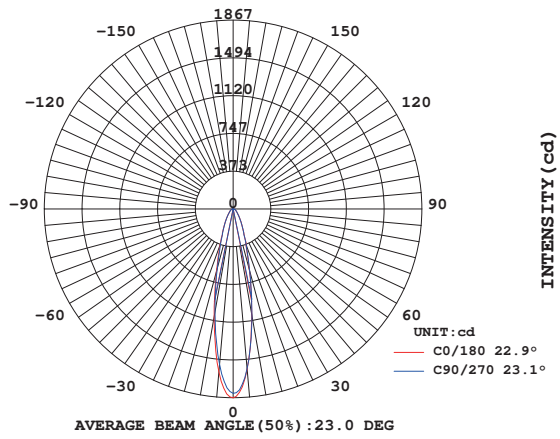
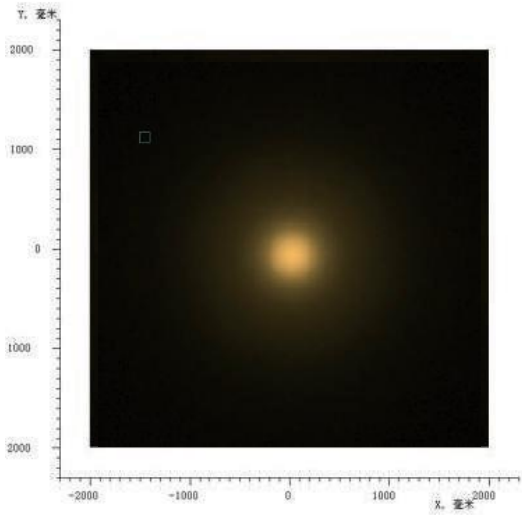
GENERAL CHARACTERISTICS

Shape	MR16
Cap - Base	GU10
Rated Wattage	7.5 W
Input Voltage	220-240 Vac
Operation Frequency	50/60 Hz
Lifetime (hours)	40,000 hrs
Switching Cycles	50,000
Start Time from 0% to 100%	< 0.2 s
Power Factor	0.9
Working Temperature	-20°C ~ 40°C
Guarantee	3 years
Dimension	W:50mm x H:58mm

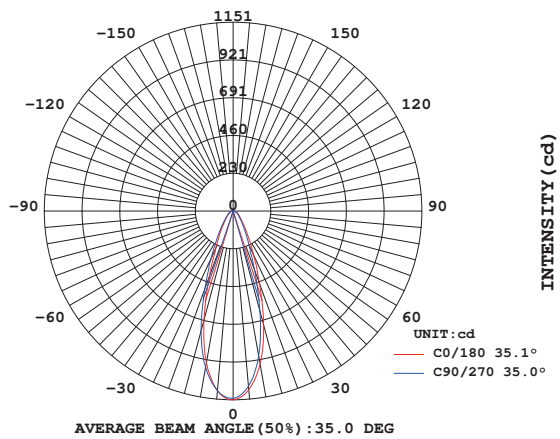
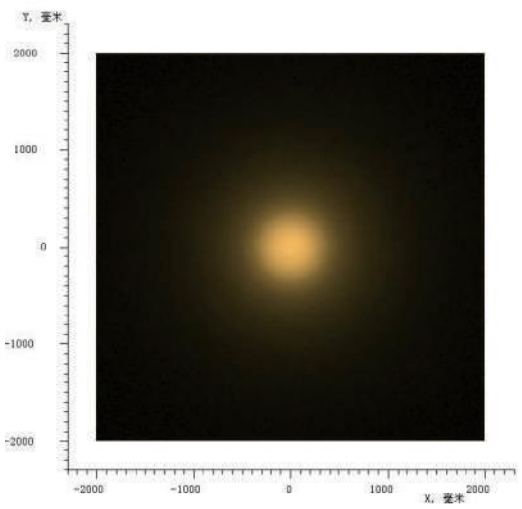
LIGHT CHARACTERISTICS

Color	Warm white / Cool white
Luminous Flux	520lm / 540lm / 590lm
Color Temperature	2700 K / 3000 K / 4000 K
Color Rendering Index	98
Lamp Efficacy	up to 70 lm/W
Lumen Maintenance Factor	70%
Beam Angle	24D -36D -55D
Dimming Type	Phase Cutting (triac)
Color Consistency	3 Step MacAdam Ellipse
Wattage Equivalent to Halogen	50W

Illuminance diagram

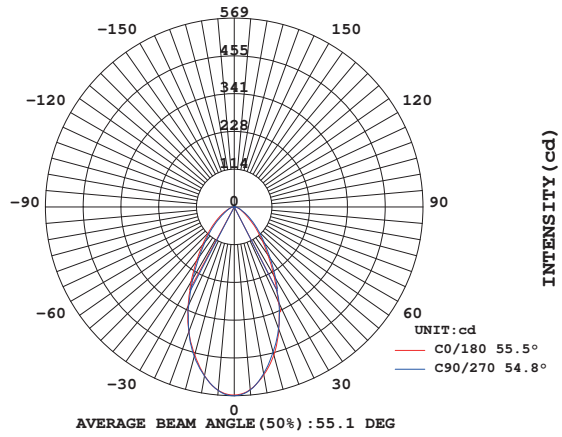
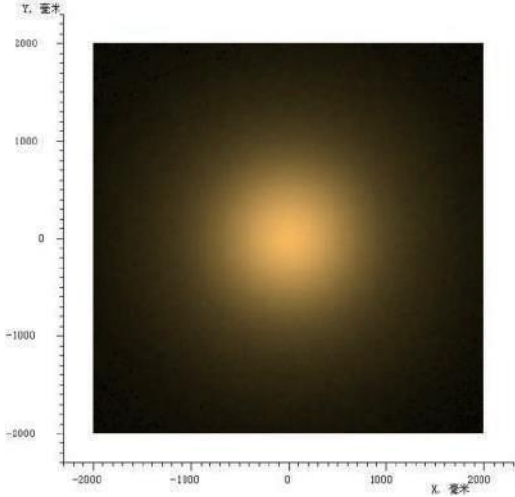


24°



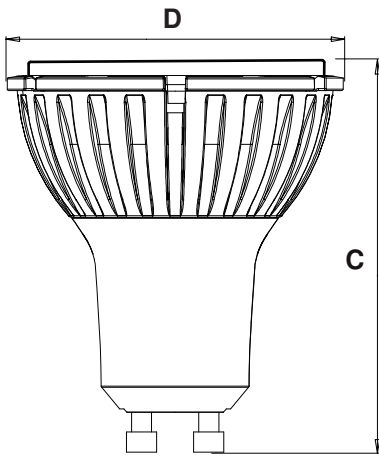
36°

Illuminance diagram



55°

Dimensional drawing



Product	D	C
TGU10FIN-7.5W-XDZOM	50 mm	58 mm